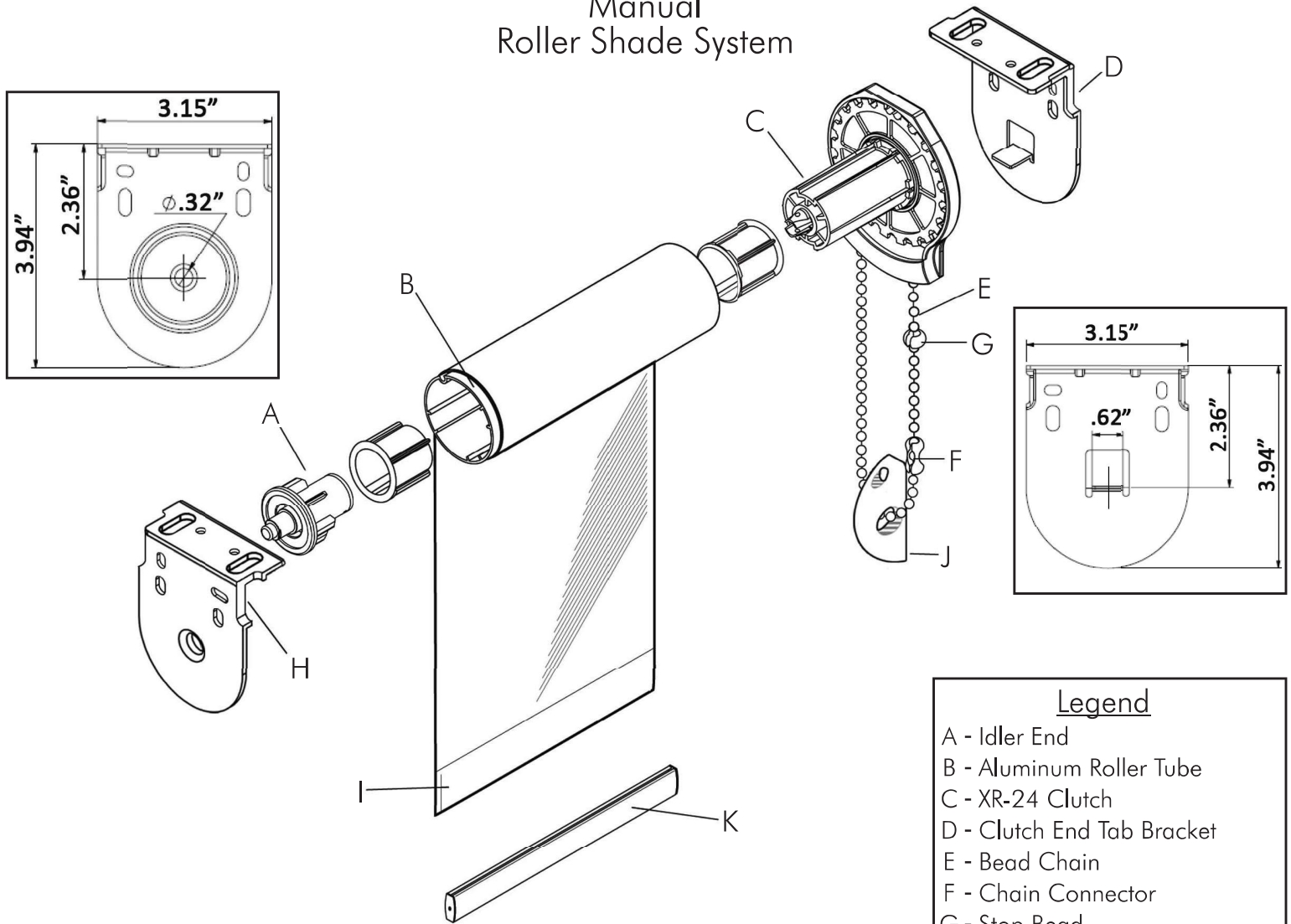


# Polar Shades XR-24

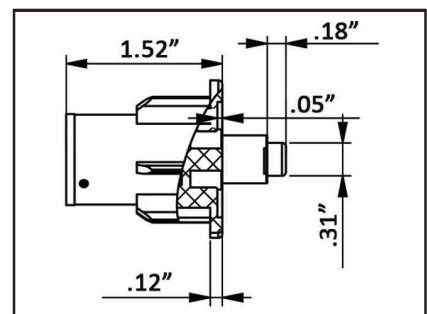
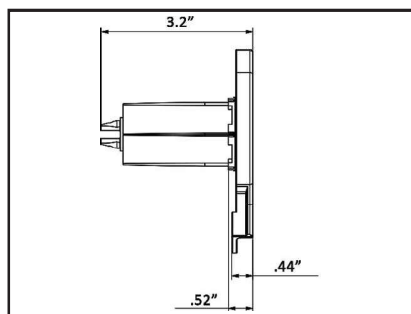
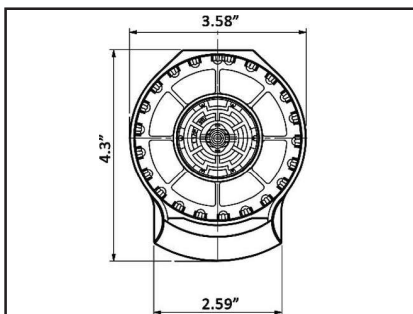
## Manual Roller Shade System



### Legend

- A - Idler End
- B - Aluminum Roller Tube
- C - XR-24 Clutch
- D - Clutch End Tab Bracket
- E - Bead Chain
- F - Chain Connector
- G - Stop Bead
- H - Idler End Tab Bracket
- I - Impulse Welded Hem Pocket
- J - Chain Tensioner
- K - Optional External Hem Bar

- ☼ Clutch Lift System has a lifting capacity of up to 24 pounds.
- ☼ Clutch design includes a metal roller bearing and stainless steel shims.
- ☼ Shades are raised and lowered by means of a bead chain.
- ☼ Hem Bar is extruded aluminum and completely enclosed in an Impulse Welded Hem Pocket. Optional External Hem Bar is available.
- ☼ Edge gap is 5/8" on the clutch end and 5/8" on the idler end.
- ☼ Optional spring assist reduces pull force, allowing easy lifting of larger shades.



Out with the old, In with the View!

877-260-6110

**POLAR SHADES®**  
sun control

polarshade.com

5520 Stephanie Street • Las Vegas, NV 89122 • info@polarshade.com