

Sonesse® ULTRA 30 WireFree RTS (Li-ion)

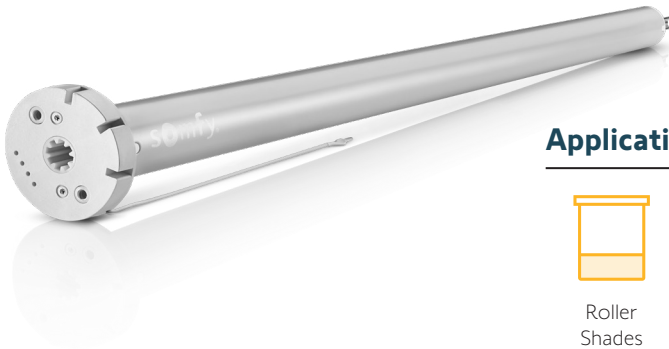
Item #: 1003310



Somfy
DESIGNED FOR
SILENCE



Radio Technology Somfy®
Offers control via
Radio Technology
Somfy® (RTS)



Applications



Roller
Shades



Cellular
Shades*



Pleated
Shades*



Roman
Shades



Sheer
Horizontal



Woven
Wood



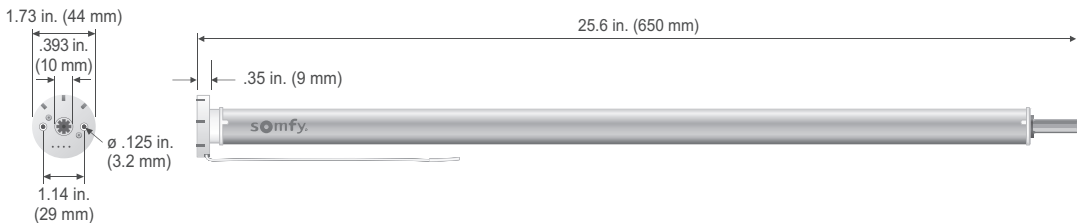
Layered
Shades

* When used with Somfy CTS40

Technical Features

Voltage Supply	12V DC	Temperature Working Range	32°F to 140°F (0°C to 60°C)
Index Protection Rating (interior use only)	IP 20	Insulation Class	Class III
Limit Switch Type	Electronic	Antenna	17.5cm wire length, must not be cut or lengthened. for greatest RF range, must be exposed and should not come in contact with metal surfaces. RF wire may need to be repositioned for optimal performance.

Dimensions



Specifications

Nominal Torque	2 Nm
Nominal Speed	20 rpm
Adjustable Speed	10-28 by increment of 2 rpm
Radio Protocol	RTS
Radio Frequency	433.42 MHz
Battery Type	12V 2600mAh (built-in Lithium-ion)
Battery Autonomy	Only recharge once per year*
Charging Time	4.5 Hrs.
Low Battery Indicator	LED (on motor head)

Certifications



*Based on average shade size and one cycle per day



© Somfy Systems, Inc. • FEBRUARY 2024

www.somfypro.com